

## ■HOW TO OPERATE

### ◆H-75

- ①Loosen Knob and pull out Wire. (Do not pull out Wire any more if you find “red mark” on Wire.)
- ②Insert Wire to the pipe slowly and when Head reaches the blockage or Head cannot be inserted due to an acute bend of the pipe, tighten Knob to hold Wire.
- ③Holding Grip by left hand, rotate Handle clockwise to clean the pipe.
- ④In case of heavy blockage, repeat to move Wire forward and backward with rotating Handle clockwise and counter-clockwise.
- ⑤After cleaning the pipe, wash the Wire with water, apply anticorrosive oil and pull back wire into the Wire Case.

### ◆H-150

- ①Loosen Knob, pull up Chuck Handle to release Wire and pull out Wire. (Do not pull out Wire any more if you find “red mark” on wire.)
- ②Insert Wire to the pipe slowly and when Head reaches the blockage or Head cannot be inserted due to an acute bend of the pipe, push down Chuck Handle to hold Wire. Tighten also Knob if Wire cannot be held by Chuck Handle.
- ③In case of heavy blockage, repeat to move Wire forward and backward with rotating Handle clockwise and counter-clockwise.
- ④After cleaning the pipe, wash the Wire with water, apply anti corrosive oil and pull back Wire into the Wire Case.  
(Optional Accessory : Rowonal R72142)

### ⚠ CAUTION

Do not operate the Chuck Handle while holding Wire with the Knob. The Chuck Jaws will be damaged.

## ■HOW TO OPEN WIRE CASE

Wire Case can be opened to clean the inside of Wire Case or fix Wire entanglement.

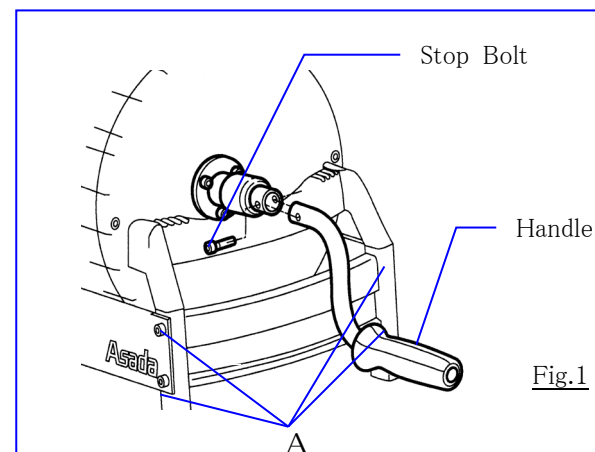
### ◆How to open

Loosen 4 pcs. of Stop Bolt A (Fig.1) and loosen 4 pcs. of Stop Bolt fixing Wire Case.  
(Wire Case for H-75 is fixed with 3 pcs. of Stop Bolt.)

## ■HOW TO FIX HANDLE (H-150)

Insert Handle and tighten Stop Bolt with the attached Allen Wrench.

Allen Wrench can be used to open Wire Case.



**Asada**  
ASADA CORPORATION

3-60, Kamiida, Nishi-Machi, Kita-Ku, Nagoya, Japan 462-8551  
TEL +81-52-914-1062 FAX +81-52-914-1065  
URL <http://www.asada.co.jp> E-mail: [trade@asada.co.jp](mailto:trade@asada.co.jp)

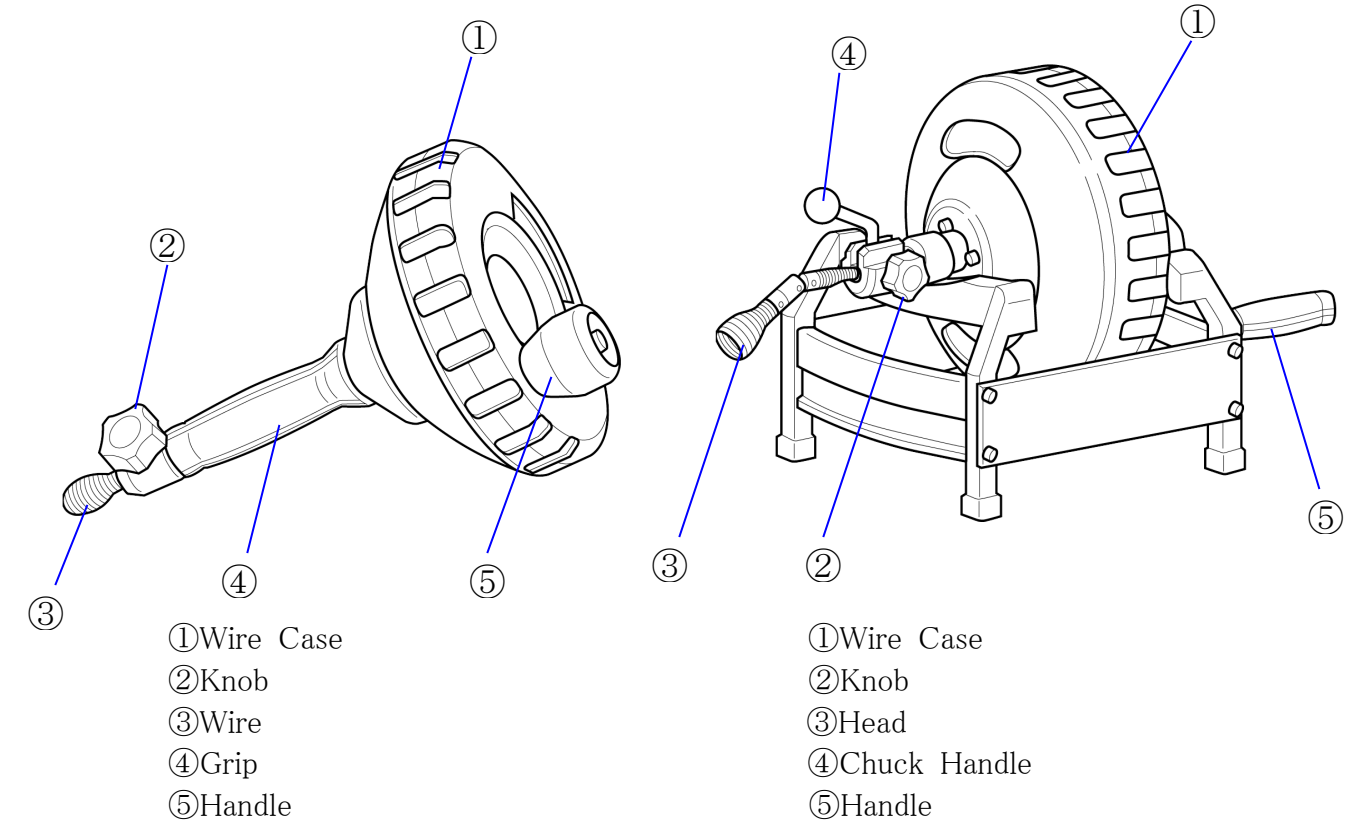
Ver.02 IM0541 A

**Asada**

## INSTRUCTION MANUAL

### DRAIN CLEANER H-75

### DRAIN CLEANER H-150



### ⚠ CLASSIFICATION OF CAUTIONS

**WARNING** : Indicates a potentially hazardous situation which, if not avoided, could result in death or serious injury.

**CAUTION** : Indicates a potentially hazardous situation which, if not avoided, may result in minor or moderate injury or damage to the machine.

**! WARNING**

- ① All visitors should be kept a safe distance from work area.  
Keep children away.
- ② When not in use, machines should be stored in dry and locked-up place – out of reach of children.
- ③ Wires and Heads should be handled carefully to avoid accidents and injury.
- ④ During operation, keep your face away from the moving parts. You may be caught in the moving parts, causing injury.
- ⑤ If you have dropped or hit the machine accidentally, carefully check for damage, crack or deformation.
- ⑥ If you have noticed abnormal state of the machine, ask for inspection or repair.



## CAUTION

- ①Wear proper apparel.  
Wear safety shoes and glasses according to the environment.
- ②Connect Wire and Head properly. Head may be dropped in pipe if not connected properly.
- ③Do not pull out Wire any more if you find “red mark” on Wire. It shows the end of Wire.
- ④Do not rotate Wire before tightening chuck to hold Wire. Wire will be twisted and it may cause accident and injury.
- ⑤Use Safety Glove exclusive for drain cleaning. Unsuitable gloves may be caught by rotating parts leading to accidents.



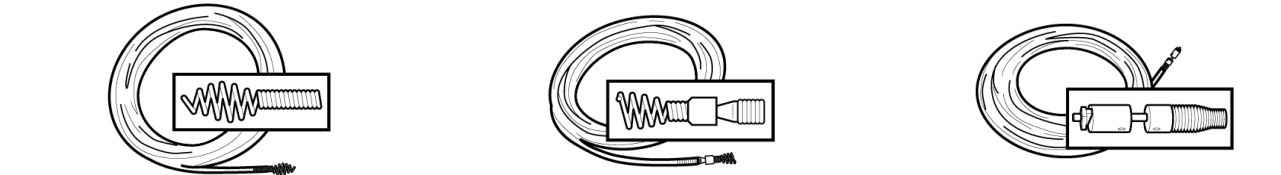
## ■ SPECIFICATIONS

Code No.	Item	Capacity	Length of Wire	Weight
DH75B	Drain Cleaner H-75 Bulb	20~75mm	φ 8mm×8m (Bulb Head)	2. 8kg
DH75D	Drain Cleaner H-75 Drop	20~75mm	φ 8mm×8m (Drop Head)	2. 8kg
DH150	Drain Cleaner H-150	20~100mm	φ 10mm×15. 5m (Universal))	10. 2kg

■ WIRE

- Bulb Head Wire                      ● Drop Head Wire                      ● Universal Wire

A barrel type Head is suitable for small pipes.	Suitable for small winding pipes	4 types of Head can be changed depending the condition.
---	----------------------------------	---



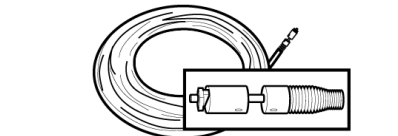
- Drop Head Wire                      ● Universal Wire

Suitable for small winding pipes                      4 types of Head can be changed depending



- Universal Wire

4 types of Head can be changed depending the condition.



## ■ HEAD

- Funnel Head                      ● Wire Brush                      ● Grease Cutter                      ● Bulb Head

Suitable to remove vegetables, ra	Suitable to remove sands, rust, sc	Suitable to remove grease,	Suitable for small pipes
gs, papers, hairs, etc.	ales, etc.	Lard, etc.	



- Wire Brush                      ● Grease Cutter                      ● Bulb Head

Suitable to remove sands, rust, scales, etc.	Suitable to remove grease, Lard, etc.	Suitable for small pipes
--	---------------------------------------	--------------------------



- Grease Cutter                      ● Bulb Head

Suitable to remove grease,	Suitable for small pipes
Lard, etc.	



- Bulb Head

Suitable for small pipes



■ STANDARD ACCESSORIES(●) AND OPTIONAL ACCESSORIES(○)

Code No.	Item	Size	H-75		H-150
			Bulb	Drop	
DH301	Bulb Head Wire	$\phi 8 \times 8\text{m}$	●		○
DH309	Bulb Head Wire	$\phi 8 \times 15.5\text{m}$			○
DH310	Bulb Head Wire	$\phi 8 \times 20\text{m}$			○
DH302	Drop Head Wire	$\phi 8 \times 8\text{m}$		●	
DH317	Drop Head Wire	$\phi 8 \times 15.5\text{m}$			○
DH318	Drop Head Wire	$\phi 8 \times 20\text{m}$			○
DH304	Universal Wire	$\phi 10 \times 8\text{m}$			○
DH303	Universal Wire	$\phi 10 \times 15.5\text{m}$			●
DH321	Universal Wire	$\phi 10 \times 20\text{m}$			○
48608	Drop Head	$\phi 15\text{mm}$			○
48606		$\phi 24\text{mm}$			○
48609	Funnel Head	$\phi 24\text{mm}$			○
48610		$\phi 32\text{mm}$			●
48611		$\phi 38\text{mm}$			○
48612		$\phi 60\text{mm}$			●
48601	Bulb Head	$\phi 24\text{mm}$			○
48613	Grease Cutter	$\phi 22\text{mm}$			○
48616		$\phi 36\text{mm}$			○
48617		$\phi 62\text{mm}$			○
48602	Double Grease Cutter	$\phi 40\text{mm}$			○
48618	Wire Brush	$\phi 20\text{mm}$			○
49619		$\phi 30\text{mm}$			○
48626		$\phi 40\text{mm}$			○
48620		$\phi 50\text{mm}$			○
70135	Wire Key				●

■ SUIABLE SIZE OF HEAD (H-150) \*For reference only

■ SUIABLE SIZE OF HEAD (H-150) \*For reference only

Head	Pipe size	1"~	1.1/4"~	1.1/2"~	2"~	2.1/2"~	3"~
Funnel Head			φ 24mm	φ 32mm	φ 38mm		φ 60mm
Bulb Head			φ 24mm				
Grease Cutter			φ 22mm		φ 36mm	φ 62mm	
Double Grease Cutter					φ 40mm		
Drop Head	φ 15mm	φ 24mm					
Wire Brush	φ 20mm	φ 30mm			φ 40mm	φ 50mm	

## ■HOW TO CHANGE HEAD (H-150)

- ①To connect Head and Wire, simply slide male  
• to female•.

They are locked with male pin.	©
--------------------------------	---

- ②To disconnect, insert Wire Key• and slide apart male and female.

- ③ Wires are male and Heads are female.

