

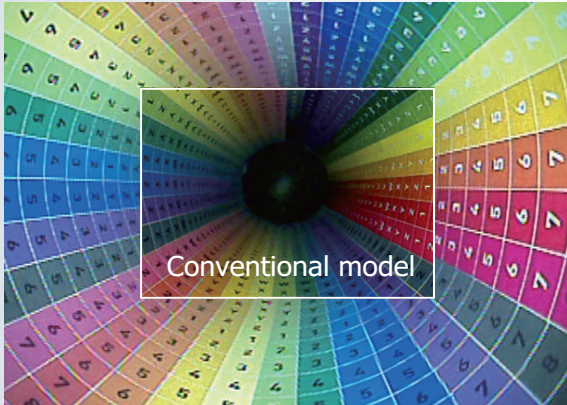
## PIPE INSPECTION CAMERAS

# CLEAR SCOPE



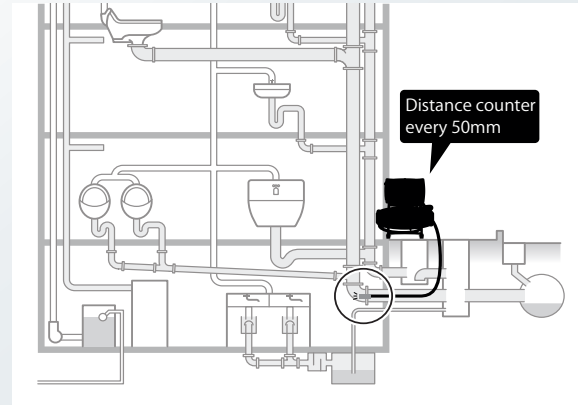
## Wide view angle

A diagonal viewing angle of 150° allows checking inside the pipe



## Easy to identify blockage

Distance counter every 50mm helps to identify locations of blockages



\*Applicable to TH2820 only.

## Large monitor

640 × 480 resolution, 5 inch TFT color LCD monitor



## Angle adjustable monitor

Easy operation in any sites



\*Image shown is Clear Scope 2820.

## 12 high brightness LEDs

Brightly illuminate inside the pipe



## Rotating drum design

Smooth and hassle-free cable handling



\*Image shown is Clear Scope 2810.

# CLEAR SCOPE 2820

Applicable Pipe Size:  $\phi$ 40~100mm | Cable Length: 20m | Head Diameter:  $\phi$ 28mm

Distance Counter | 2x Digital Zoom | Image Flip



Image for illustration only.

- Wide angle camera with distance counter to see hidden areas.
- 150° diagonal wide angle camera for a clearer view inside pipes.
- Distance counter makes it easier to locate blockages.
- Main unit angle can be freely adjusted.

Code No.	<b>TH2820</b>
Battery	Lithium-polymer battery (charging time: ~3 hours, usage time per full charge: ~2 hours) ※ Actual usage time may vary depending on battery condition and usage. AC adapter (input: AC 100-240V, output: DC 5V)
Camera	Head diameter: $\phi$ 28mm / cable length: 20m (minimum bend radius: 110mm)
Applicable Pipe Size	$\phi$ 40mm~100mm (use Brush Guide 28, optional accessory, for $\phi$ 100mm pipes)
Pipe Bend Clearance	$\phi$ 40mm~100mm
Field Of View	150° (diagonal)
Focal Range	5cm~60cm
Monitor	5" TFT color LCD / resolution: 640 × 480 pixels
Weight	5.5kg (including monitor and drum)
File Format	Resolution: 640 × 480 pixels (still image: JPEG / video: ASF)
Storage Media	SD card (supports up to 32GB)
External Output	AV output (NTSC / PAL), USB (mass storage)
Standard Accessories	Clear Scope RS-5 Main Unit, Camera Cable 2820 Drum Set, AC Adapter, Mini USB Cable, Video Cable, SD Card, Coil Cable, Carrying Case

### Optional Accessories

#### Camera Cable Adapter

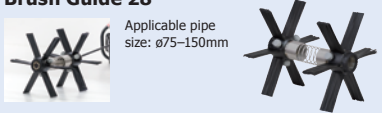
Connects Clear Scope RS-5 to optional camera cables.



Code No. **TH864**

#### Brush Guide 28

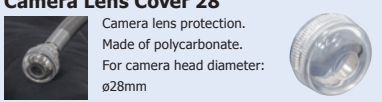
Applicable pipe size:  $\phi$ 75~150mm



Code No. **TH879**

#### Camera Lens Cover 28

Camera lens protection.  
Made of polycarbonate.  
For camera head diameter:  $\phi$ 28mm



Code No. **TH887**

## CAMERA CABLE 2820



※Image shown is drum set.

Item	Camera Cable 2820 (cable only)	Camera Cable 2820 (drum set)
Code No.	<b>TH812</b>	<b>TH820</b>
Applicable Pipe Size	$\phi$ 40~100mm	
Camera	Head diameter: $\phi$ 28mm / cable length: 20m (minimum bend radius: 110mm)	
Included Items	Camera Cable	Camera Cable, Drum, Coil Cable, Carrying Case

# CLEAR SCOPE 2810

Applicable Pipe Size:  $\phi 40\text{--}100\text{mm}$

Cable Length: 10m

Head Diameter:  $\phi 28\text{mm}$

Rotary Drum

2x Digital Zoom

Image Flip

WEBSITE



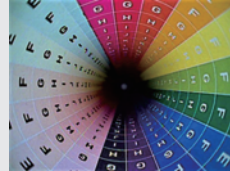
### Handheld operation

Compact and lightweight, can be used without placing it down



### Wide field of view

150° diagonal wide angle camera for a clearer pipe inspection



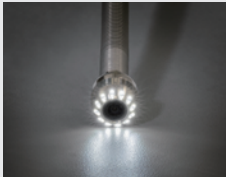
### Easy to carry

All standard accessories fit into a single storage bag for easy transport



### 12 high brightness LEDs

Illuminate the inside of pipes clearly



### Rotating drum design

Smooth and hassle-free cable handling



Code No.	<b>TH2810</b>
Battery	Lithium-polymer battery (charging time: ~3 hours, usage time per full charge: ~2 hours) Actual usage time may vary depending on battery condition and usage. AC adapter (input: AC 100-240V, output: DC 5V)
Camera	Head diameter: $\phi 28\text{mm}$ / cable length: 10m (minimum bend radius: 90mm)
Applicable Pipe Size	$\phi 40\text{mm}\sim 100\text{mm}$ (use Brush Guide 28, optional accessory, for $\phi 100\text{mm}$ pipes)
Pipe Bend Clearance	$\phi 40\text{mm}\sim 100\text{mm}$
Field Of View	150° (diagonal)
Focal Range	5cm~60cm
Monitor	3.5" TFT color LCD / resolution: 320 × 240 pixels
Weight	2.0kg (including monitor and drum)
File Format	Resolution: 640 × 480 pixels (still image: JPEG / video: ASF)
Storage Media	SD card (supports up to 32GB)
External Output	AV output (NTSC / PAL), USB (mass storage)
Standard Accessories	Clear Scope Digital F800, Mini USB Cable, Complete Cleaning Kit, AC Adapter, SD Card, Camera Cable 2810 Drum Set, Storage Bag

### Optional Accessories

#### Camera Cable 2810 Drum Set



Clear Scope Digital F800 is not included.

Code No. **TH901**

#### Camera Lens Cover 28



Camera lens protection.  
Made of polycarbonate.  
For camera head diameter:  $\phi 28\text{mm}$



Code No. **TH887**

# CLEAR SCOPE 2830HD-X

Applicable Pipe Size:  $\phi$ 40-100mm | Cable Length: 30m | Head Diameter:  $\phi$ 28mm

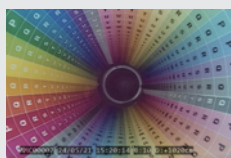
Distance Counter | 2x Digital Zoom | Auto Level



430mm  
420mm  
300mm  
Image for illustration only.

### High definition video with clear depth

165° diagonal camera and wide screen for wide view images



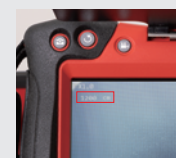
### Camera head with auto level function

High-brightness LED illuminates dark pipes, and auto level keeps orientation stable



### Camera cable with distance counter

Clears camera cable insertion distance and helps identify problem areas



### Monitor angle adjustment function (with sun visor)

Reduces glare from lighting or sunlight and allows monitor angle to be adjusted for the work environment



### All-in-one storage bag

Easy to carry for work trips and also keeps storage neat and organized



Code No.	<b>TH2830</b>
Battery	Built-in lithium-ion battery, AC adapter (input: AC 100-240V, output: DC 15V) Charging time: ~4 hours, usage time per full charge: ~4 hours *Actual usage time may vary depending on battery condition and usage.
Camera Head	Outer diameter: $\phi$ 28mm (with auto level) Lighting: 12 high brightness LEDs, waterproof & dustproof: IP68
Camera Cable	$\phi$ 7mm x 30m (minimum bend radius: 100mm), waterproof & dustproof: IP68, with distance counter
Applicable Pipe Size Bend Clearance	$\phi$ 40mm~150mm (Use Brush Guide 28, optional accessory, for $\phi$ 100mm and above)
Field Of View	165° (diagonal)
Focal Range	5cm or above
Monitor	7" TFT color LCD / resolution: 1,024 x 600 pixels
Weight	10.3kg
File Format	Resolution: 1,280 x 720 pixels (still image: JPEG / video: AVI)
Storage Media	SD card (supports 4-32 GB)
External Output	AV output (mini HDMI), USB (mass storage)
Standard Accessories	AC Adapter, Mini USB cable, SD Card, Complete Cleaning Kit, Storage Bag

### Optional Accessories

#### Brush Guide 28

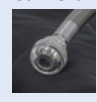


Applicable pipe size:  $\phi$ 75-150mm



Code No. **TH879**

#### Camera Lens Cover 28



Camera lens protection. Made of polycarbonate. For camera head diameter:  $\phi$ 28mm



Code No. **TH887**