

THREADING MACHINE

BEAVER 50G

Built to perform, built to last
Trusted worldwide for quality and durability over the decades



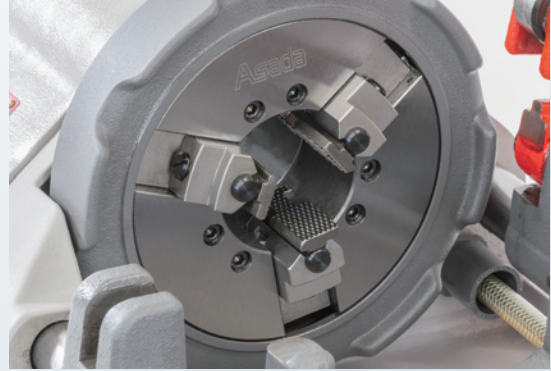
Accurate threading

Die-Head with automatic profiling system and high durable dies



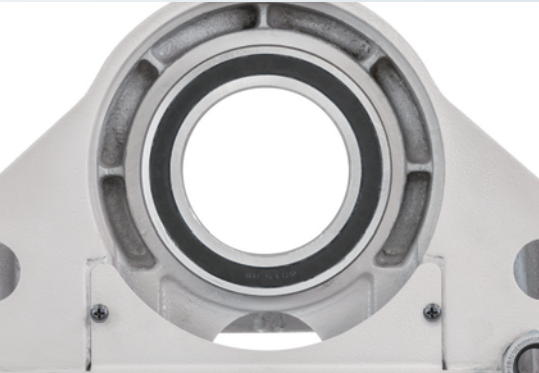
Slip-free chucking

Easy-to-grip outer ring and wider jaws grab material firmly



High durable spindle

Supported by high precision ball bearing



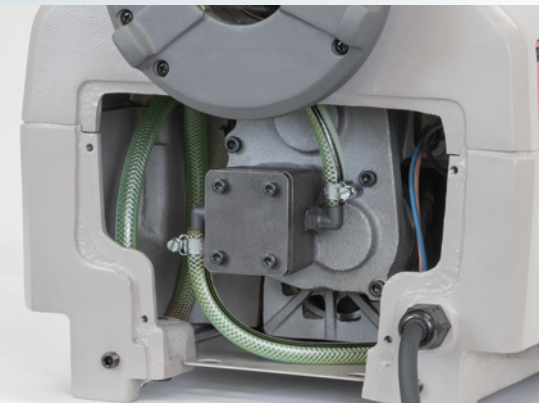
High power motor

Motor rotation is hard to drop even under poor electric condition



Stable oil supply

High capacity pump maintains sufficient oil flow even at low rotation



Easy maintenance

Easy to replace consumables



BEAVER 25

1"

WEBSITE



BEAVER 50G

2"

WEBSITE



MOVIE



Pipe: 1/4"~3/8", Bolt: BSW3/8"~1"・10~24mm, Conduit: 19~39mm・BSPS1/2"~1" **Optional Items**

| Threading Capacity | Spindle Speed | Motor |
|--------------------|---------------------|---------------------|
| Pipe 1/4"~1" | 52min ⁻¹ | 220-230V, 240V 350W |

| Item | Code No. | Weight | Standard Accessories |
|----------------------------|--------------|--------|--|
| Beaver 25 BSPT 220-230V | BE25S | 19kg | Auto Die-Head:1/2"~1" Dies:AM1/2"~3/4", AM1"~1.1/2" Threading Oil White 1L (1 bottle) |
| Beaver 25 NPT 220-230V | B25SN | | |
| Beaver 25 BSPT 240V | BE25D | | |

Pipe: 1/4"~3/8", Bolt: BSW3/8"~2"・10~36mm, Conduit: 19~51mm・1/2"~2" **Optional Items**

| Threading Capacity | Spindle Speed | Motor |
|--------------------|---------------------|---------------|
| Pipe 1/4"~2" | 38min ⁻¹ | 220-240V 750W |

| Item | Code No. | Weight | Standard Accessories |
|--------------------|---------------|--------|--|
| Beaver 50G BSPT | BG51PS | 46kg | Manual Die-Head:1/2"~2" Dies:1/2"~3/4", 1"~2" Threading Oil 4L (1 can) |
| Beaver 50G NPT | BG51PN | | |
| Beaver 50G AT BSPT | BG51AS | | Auto Die-Head:1/2"~2" Dies:1/2"~3/4", 1"~2" Threading Oil 4L (1 can) |
| Beaver 50G AT NPT | BG51AN | | |

Applicable Motor & Spare Parts

BE25

BE50, BE50G Motor BE603 / BE603A

BE50 Type-P Motor BE603P
(Motor has been discontinued)



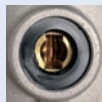
Carbon Brush 6 x 10 x 14



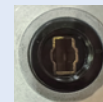
Carbon Brush 6.5 x 12.5 x 17



Carbon Brush 6.4 x 12.4 x 17



Carbon Holder



Carbon Holder



Carbon Cap



Carbon Cap

| Item | Code No. | Applicable Model | Item | Code No. | Applicable Model | Item | Code No. | Applicable Model |
|-----------------------------|--------------|------------------|---------------------------------|--------------|-------------------------|---------------------------------|--------------|------------------------|
| Carbon Brush 6 x 10 x 14 | 70819 | BE25, AS1 | Carbon Brush 6.5 x 12.5 x 17 | 70851 | BE50, BE50G, AS1.5, AS2 | Carbon Brush 6.4 x 12.4 x 17 | 70929 | BE50 with Type-P motor |
| | | | Carbon Holder | 70707 | BE50, BE50G | Carbon Holder (Discontinued) | 70930 | BE50 with Type-P motor |
| | | | Carbon Cap (Thickness=6.6mm) | 70708 | BE50, BE50G | Carbon Cap (Thickness=8.2mm) | 70931 | BE50 with Type-P motor |

BEAVER 80

3"



BEAVER 100

4"



Pipe: 1/4"~3/8", Bolt: BSW3/8"~2"·10~36mm, Conduit: 19~75mm·1/2"~3" **Optional Items**

| Threading Capacity | Spindle Speed | Motor |
|--------------------|---------------------|-----------------|
| Pipe 1/4"~3" | 33min ⁻¹ | 220-240V 1,140W |

| Item | Code No. | Weight | Standard Accessories |
|-------------------|--------------|--------|--|
| Beaver 80 BSPT | BE80S | 74kg | Manual Die-Head: 1/2"~2", 2"~3" |
| Beaver 80 NPT | BE81S | | Dies: 1/2"~3/4", 1"~2", 2"~3" |
| Beaver 80 AT BSPT | BE8AS | | Threading Oil 4L (1 can) Auto Die-Head: 1/2"~2", 2.1/2"~3" |
| Beaver 80 AT NPT | B81AS | | Dies: 1/2"~3/4", 1"~2", 2.1/2"~3" |
| | | | Threading Oil 4L (1 can) |

Pipe: 1/4"~3/8", Bolt: BSW3/8"~2"·10~36mm, Conduit: 19~75mm·1/2"~4" **Optional Items**

| Threading Capacity | Spindle Speed | Motor |
|--------------------|----------------------------------|-----------------|
| Pipe 1/4"~4" | 45·18min ⁻¹ (2 speed) | 220-240V 1,140W |

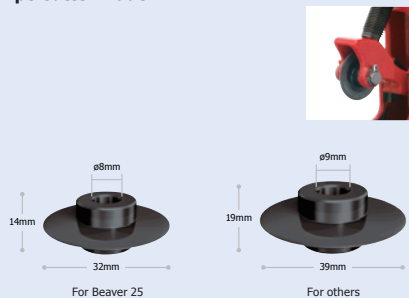
| Item | Code No. | Weight | Standard Accessories |
|--------------------|--------------|--------|--------------------------------------|
| Beaver 100 AT BSPT | BE1AS | 105kg | Auto Die-Head: 1/2"~2", 2.1/2"~4" |
| Beaver 100 AT NPT | BE1AN | | Dies: 1/2"~3/4", 1"~2", 2.1/2"~4" |
| | | | Threading Oil 4L (1can) |

Applicable Motor & Spare Parts

BE80, BE100 Old Motor, BTM25Pro BE864

BE80, BE100 Type-P Motor BE864P

Pipe Cutter Blade



| Item | Code No. | Applicable Model |
|---------------------------------|--------------|-------------------------------------|
| Carbon Brush 6 x 20 x 24.5 | 70858 | BE80 & BE100(Old motor) BTM25Pro |
| Carbon Holder | 70859 | BE80 & BE100(Old motor) BTM25Pro |
| Carbon Cap (Thickness=7.1mm) | 70860 | BE80 & BE100(Old motor) BTM25Pro |

| Item | Code No. | Applicable Model |
|----------------------------------|--------------|-------------------------------|
| Carbon Brush 7 x 17 x 24.5 | 70919 | BE80, BE100 with Type-P motor |
| Carbon Holder | 70920 | BE80, BE100 with Type-P motor |
| Carbon Cap (Thickness=10.6mm) | 70921 | BE80, BE100 with Type-P motor |

| Applicable Model | Applicable Material | Code No. |
|---|---|--------------|
| Beaver 25 Astronic 1 | For steel pipe | AS058 |
| | For stainless steel pipe | AS113 |
| Others than Beaver 25 Astronic 1※ | For steel pipe & stainless steel pipe | BG620 |

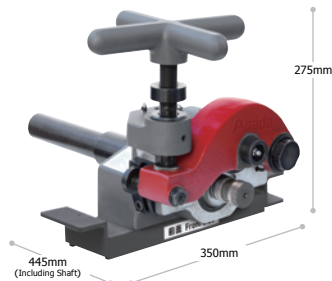
※ Piset40, 60, 90, 35G, 45B, No.6, AS2, 3, 4, BE50, 50G, 80, 100

ROLL GROOVER 640

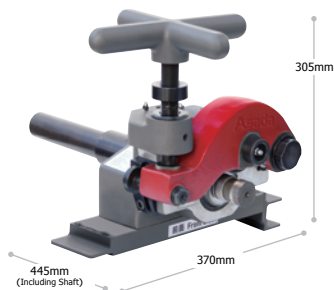
For Beaver 50, 50G



For Beaver 80



For Beaver 100



- Portable type. Mounting on threading machine.
- Durable enough for steel pipe up to 6" Sch 40".
- Easy operation with cross handle.

WEBSITE



| Code No. | For BEAVER 50 GR641 | For BEAVER 80 GR642 | For BEAVER 100 GR643 |
|----------------------|---|-------------------------------|--------------------------------|
| Capacity | Steel Pipe:1"~6"(Sch10-40) | | |
| Weight | 12kg (without base bracket, connecting shaft) | | |
| Standard Accessories | Roller Shaft set 2"~6", Connecting Shaft. Base Bracket※ (for 1model only), Depth Gauge. Hex Wrench 3, 4, 5, 6mm | | |

- ※ Standard set for 2"~6". Optional roller shaft is required for 1"~1.1/2".
- ※ Applicable to other brands' threading machines with optional base bracket.

Optional Accessories

Roller Shaft Set

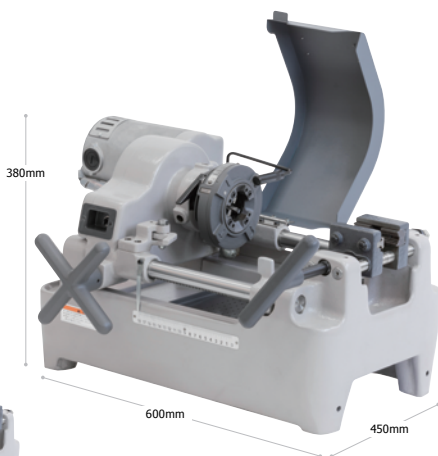
| Size | Code No. |
|--------------|--------------|
| 1" | GR028 |
| 1.1/4-1.1/2" | GR031 |
| 2"-6" | GR033 |

Base Bracket

| Applicable model | Code No. |
|------------------|--------------|
| Beaver 50 · 50G | GR103 |
| Beaver 80 | GR104 |
| Beaver 100 | GR105 |

BOLT MACHINE 25PRO

Metric: 8-24mm
BSW, UNC: 5/16 - 1"



- Durable spindle supported by ball bearing.
- High speed bolt threading with high power motor.
- Easy operation with automatic dies opening system.
- Large volume oil tank for efficient cooling.

WEBSITE



MOVIE





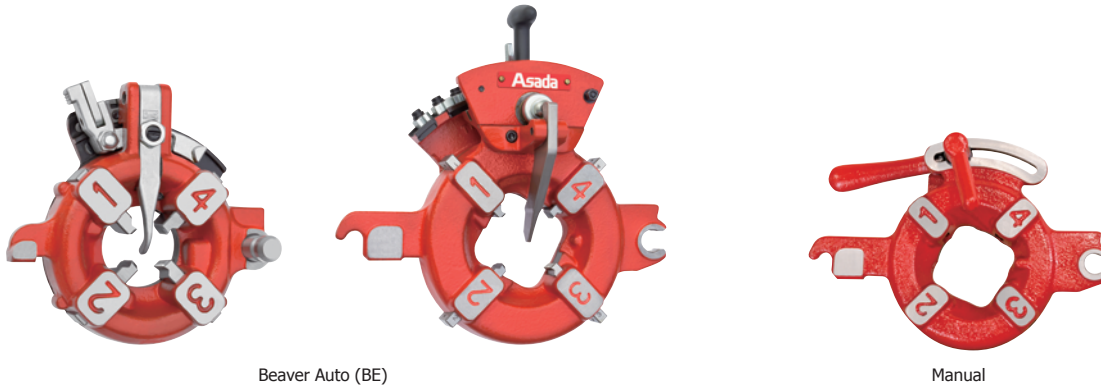
| Bolt Standard | | Metric | BSW | UNC |
|----------------------|----------|-----------------|-----------------|-----------------|
| Code No. | Right | BM10M | BM10W | BM10U |
| | Left | BM11M | BM11W | BM11U |
| Capacity | | 8~24mm | 5/16"~1" | 5/16"~1" |
| Motor | | 220-240V 1,140W | | |
| Spindle Speed | | 80rpm(No load) | | |
| Weight | | 45kg | | |
| Standard Accessories | Die-Head | 8-24mm | BSW 5/16"~1" | UNC 5/16"~1" |
| | Dies | 12mm & 14-16mm | BSW 1/2" & 5/8" | UNC 1/2" & 5/8" |

- ※ UNF thread is applicable with UNF dies on UNC model.
- ※ Optional dies for Metric Conduit up to 32mm is available.

DIE-HEAD FOR BOLT MACHINE

Dies selection charts are available on page 44-49.

| Bolt Standard | Size | Code No. | Applicable Model | |
|---|-----------------|----------|------------------|----------|
| | | | 25Pro | No.1 |
|  | BSW | 5/16"~1" | 10100 | ● |
| | ISO Metric | 8~24mm | 10118 | ● |
| | UNC / UNF | 5/16"~1" | 10119 | ● |
|  | BSW Left | 3/8"~1" | 10117 | ● (LEFT) |
| | ISO Metric Left | 8~24mm | 10126 | ● (LEFT) |



Beaver Auto (BE)

Manual

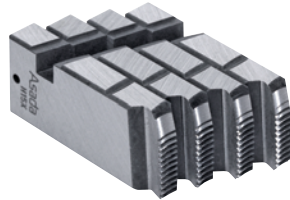
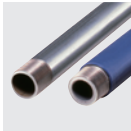
● 1.1/2" is not applicable

| Item | | | Code No. | Applicable Model | | | | | |
|-----------------------------|----------------|------------------------|-----------------|-----------------------|--------------|-------------------------------|--------------------------|----------------------|------|
| Type | Standard | Size | | Beaver 25, Astronic 1 | Astronic 1.5 | Beaver 50, 50G, AS2, P40, P60 | Beaver 80, AS3, P90, 3SG | Beaver 100, AS4, 4SB | No.6 |
| Beaver (Auto) | BSPT | BE 1/2~1" | BE380 | ● | ● | | | | |
| | | BE 1/2~2" | BE001 | | | ● | ● | ● | ● |
| | | AT 1/2~2" | 52100 | | | ● | ● | ● | ● |
| | | AT 2.1/2~3" | 52200 | | | | ● | ● | ● |
| | | AT 2.1/2~4" | 64200 | | | | | ● | ● |
| Manual | BSPT | 1/4~3/8" (BSW 3/8~1") | AS109 | ● | ● | | | | |
| | | 1/4~3/8" (BSW 3/8~1") | 20114 | | | ● | ● | ● | |
| | | 1/2~2" (NPT 1/2~2") | 63090 | | | ● | ● | ● | ● |
| | | 2~3" (NPT 2.1/2~3") | 20127 | | | | ● | ● | ● |
| | | 3.1/2~4" | 04110 | | | | | ● | ● |
| Beaver (Auto) | NPT | BE 1/2~1" | BE389 | ● | ● | | | | |
| | | BE 1/2~2" | BE01N | | | ● | ● | ● | ● |
| | | BE 1/2~2" (Type RD) | BE057 | | | ● | ● | ● | ● |
| | | AT 1/2~2" | 52500 | | | ● | ● | ● | ● |
| | | AT 2.1/2~3" | 52600 | | | | ● | ● | ● |
| Manual | NPT | 1/4~3/8" | AS122 | ● | ● | | | | |
| | | 1/4~3/8" | 20165 | | | ● | ● | ● | |
| | | 1/2~2" (BSPT 1/2~2") | 63090 | | | ● | ● | ● | ● |
| | | 2.1/2~3" (BSPT 2~3") | 20127 | | | | ● | ● | ● |
| For Bolt Thread (Manual) | BSW | 3/8~1" (BSPT 1/4~3/8") | AS109 | ● | ● | | | | |
| | | 3/8~1" (BSPT 1/4~3/8") | 20114 | | | ● | ● | ● | |
| | ISO Metric | 1.1/8~2" | 63096 | | | ● | ● | ● | |
| | | 10~24mm | AS110 | ● | ● | | | | |
| | | 10~24mm | 20158 | | | ● | ● | ● | |
| | 27~36mm (42mm) | 63095 ※1 | | | ● | ● | ● | | |
| UNC / UNF | 3/8~1" | 20160 | | | ● | ● | ● | | |
| UNC | 1.1/8~1.1/2" | 63090 ※2 | | | ● | ● | ● | | |
| For Conduit Thread (Manual) | BSPS(BSPP)/C | 1/2~1.1/4": C19~39mm | AS124 | ● | ● | | | | |
| | | 1/2~1.1/4": C19~39mm | 20147 | | | ● | ● | ● | |
| | | 1.1/2~3": C51~75mm | 20157 | | | ● | ● | ● | ● |
| | NPSM | 1/2~2" | 63090 ※3 | | | ● | ● | ● | |
| | | 3.1/2~4" | 04110 ※3 | | | | | ● | |
| | ISO Metric | 16~25mm | AS134 | ● | ● | | | | |
| | 16~32mm | 63094 | | | ● | ● | ● | | |

※1 Scale Plate for 42mm is not available.
 ※2 Scale Plate for UNC is not available.
 ※3 Scale Plate for NPSM is not available.

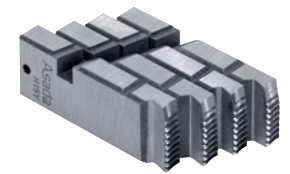
DIES

Dies selection charts are available on page 44-49.



For taper pipe threading (Beaver, Astronic, Piset)

| Standard | Size | Code No. | Material | TPI | Suitable Die-Head | | | |
|---------------|-----------------------------|---------------|-----------------|--------------|-----------------------|------|----|--------|
| Auto | AM 1/2 - 3/4" | AS086 | Alloy | 14 | Auto (BE25, AS1, 1.5) | | | |
| | AM 1 - 1.1/2" | AS087 | Alloy | 11 | | | | |
| | AM 1/2 - 3/4" | AS111 | HSS | 14 | | | | |
| | AM 1 - 1.1/2" | AS112 | HSS | 11 | | | | |
| | 1/2 - 3/4" | 89211 | Alloy | 14 | | | | |
| | 1 - 2" | 89227 | Alloy | 11 | | | | |
| | AT 2.1/2 - 3" | 89228 | Alloy | 11 | | | | |
| | AT 2.1/2 - 4" | 59803 | Alloy | 11 | | | | |
| | AT 3.1/2 - 4" | 89229 | Alloy | 11 | | | | |
| | AT 5 - 6" | 89244 | Alloy | 11 | | | | |
| | Auto | BE 1/2 - 3/4" | 89266 | N - Alloy | 14 | Auto | | |
| | | BE 1 - 2" | 89267 | N - Alloy | 11 | | | |
| | | BE 2.1/2 - 3" | 89268 | N - Alloy | 11 | | | |
| | | 1/2 - 3/4" | 89203 | HSS | 14 | | | |
| | | 1 - 2" | 89248 | HSS | 11 | | | |
| | | AT 2.1/2 - 3" | 89249 | HSS | 11 | | | |
| | | AT 2.1/4 - 4" | 59966 | HSS | 11 | | | |
| | | Manual | BSPT 1/4 - 3/8" | 89046 | Alloy | | 19 | Manual |
| | | | 1/2 - 3/4" | 89211 | Alloy | | 14 | |
| | | | 1 - 2" | 89227 | Alloy | | 11 | |
| 1.1/2 - 2" | 89049 | | Alloy | 11 | | | | |
| 2 - 3" | 89051 | | Alloy | 11 | | | | |
| 3.1/2 - 4" | 89052 | | Alloy | 11 | | | | |
| BE 1/2 - 3/4" | 89266 | | N - Alloy | 14 | | | | |
| BE 1 - 2" | 89267 | | N - Alloy | 11 | | | | |
| BE 2 - 3" | 89323 | | N - Alloy | 11 | | | | |
| 1/4 - 3/8" | 89053 | | HSS | 19 | | | | |
| 1/2 - 3/4" | 89203 | | HSS | 14 | | | | |
| 1 - 2" | 89248 | | HSS | 11 | | | | |
| 1.1/2 - 2" | 89056 | | HSS | 11 | | | | |
| 2 - 3" | 89142 | | HSS | 11 | | | | |
| 3.1/2 - 4" | 89184 | | HSS | 11 | | | | |
| Auto | 1/2 - 3/4" (For steel pipe) | 89255 | HSS | 14 | Auto | | | |
| | 1 - 2" (For steel pipe) | 89256 | HSS | 11 | | | | |



For parallel pipe threading (conduit) (Beaver, Astronic, Piset, Mini-Con)

| Standard | Size | Code No. | Material | TPI | Suitable Die-Head |
|-------------|--------------------|--------------|----------|-----|---------------------------|
| C | 19 - 25mm | 89021 | Alloy | 16 | Mini-Con, Manual(Conduit) |
| | 31 - 39mm | 89022 | Alloy | 16 | |
| | 51 - 75mm | 89023 | Alloy | 16 | |
| BSPS (BSPP) | 1/2 - 3/4" | 89024 | Alloy | 14 | Mini-Con, Manual(Conduit) |
| | 1 - 1.1/4" | 89025 | Alloy | 11 | |
| | 1.1/2 - 2" | 89026 | Alloy | 11 | |
| | 2.1/2 - 3" | 89027 | Alloy | 11 | |
| | 3.1/2 - 4" (LARGE) | 89071 | Alloy | 11 | |
| | 1/2 - 3/4" | 89259 | HSS | 14 | |
| 2.1/2 - 3" | 89262 | HSS | 11 | | |

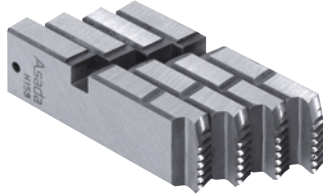
| Standard | Size | Code No. | Material | TPI | Suitable Die-Head | | |
|---------------|---------------|----------------|--------------|-------|-----------------------|------|--------|
| Auto | AM 1/2 - 3/4" | AS120 | Alloy | 14 | Auto (BE25, AS1, 1.5) | | |
| | AM 1 - 1.1/2" | AS121 | Alloy | 11.5 | | | |
| | 1/2 - 3/4" | 89101 | Alloy | 14 | | | |
| | 1 - 2" | 89102 | Alloy | 11.5 | | | |
| | AT 2.1/2 - 3" | 89245 | Alloy | 8 | | | |
| | AT 2.1/2 - 4" | 59912 | Alloy | 8 | | | |
| | AT 3.1/2 - 4" | 89246 | Alloy | 8 | | | |
| | AT 5 - 6" | 89247 | Alloy | 8 | | | |
| | BE 1/2 - 3/4" | 89324 | N - Alloy | 14 | | | |
| | BE 1 - 2" | 89325 | N - Alloy | 11.5 | | | |
| | BE 2.1/2 - 3" | 89326 | N - Alloy | 8 | | | |
| | 1/2 - 3/4" | 89157 | HSS | 14 | | | |
| | 1 - 2" | 89158 | HSS | 11.5 | | | |
| | 2.1/2 - 3" | 89282 | HSS | 8 | | | |
| | 2.1/2 - 4" | 59997 | HSS | 8 | | | |
| | Manual | NPT 1/4 - 3/8" | 89100 | Alloy | | 18 | Manual |
| | | 1/2 - 3/4" | 89101 | Alloy | | 14 | |
| | | 1 - 2" | 89102 | Alloy | | 11.5 | |
| | | 1.1/2 - 2" | 89103 | Alloy | | 11.5 | |
| | | 2.1/2 - 3" | 89258 | Alloy | | 8 | |
| 3.1/2" - 4" | | 89105 | Alloy | 8 | | | |
| BE 1/2 - 3/4" | | 89324 | N - Alloy | 14 | | | |
| BE 1 - 2" | | 89325 | N - Alloy | 11.5 | | | |
| BE 2.1/2 - 3" | | 89327 | N - Alloy | 8 | | | |
| 1/4 - 3/8" | | 89274 | HSS | 18 | | | |
| 1/2 - 3/4" | | 89157 | HSS | 14 | | | |
| 1 - 2" | | 89158 | HSS | 11.5 | | | |
| 1.1/2 - 2" | | 89159 | HSS | 11.5 | | | |
| 2.1/2 - 3" | | 89273 | HSS | 8 | | | |

| Standard | Size | Code No. | Material | TPI | Suitable Die-Head |
|------------|--------------|--------------|----------|------|---------------------------|
| NPSM | 1/2 - 3/4" | 89148 | Alloy | 14 | Mini-Con, Manual(Conduit) |
| | 1 - 1.1/4" | 89149 | Alloy | 11.5 | |
| | 2.1/2 - 3" | 89151 | Alloy | 8 | |
| | 1/2 - 3/4" | 89010 | Alloy | 14 | Manual(63090) |
| | 1 - 2" | 89011 | Alloy | 11.5 | Mini-Con, Manual(04110) |
| 3.1/2 - 4" | 89272 | Alloy | 8 | | |

| Standard | Size | Code No. | Material | TPI | Suitable Die-Head |
|----------------|-----------|--------------|----------|-------|---|
| Metric Conduit | 16 - 20mm | 89110 | Alloy | 1.5mm | Manual(Conduit) |
| | 25 - 32mm | 89111 | Alloy | 1.5mm | |
| | 16 - 32mm | 89208 | Alloy | 1.5mm | Auto (Beaver 25, AS1, 1.5), Mini-Con 82 |
| | 40 - 63mm | 89209 | Alloy | 1.5mm | Mini-Con 82 |

DIES

Dies selection charts are available on page 44-49.



For bolt threading (Beaver, Piset, Mini-Con, Bolt Machine)

| Standard | Size | Code No. | Material | TPI | Suitable Die-Head |
|---------------------|----------------|--------------|-----------|---|---------------------------------|
| BSW | 5/16" | 89079 | Alloy | 18 | 25Pro, No.1, Mini-Con |
| | 3/8" | 89080 | Alloy | 16 | 25Pro, No.1, Manual(Bolt) |
| | 1/2" | 89081 | Alloy | 12 | |
| | 5/8" | 89082 | Alloy | 11 | |
| | 3/4" | 89083 | Alloy | 10 | |
| | 7/8" | 89084 | Alloy | 9 | |
| | 1" | 89085 | Alloy | 8 | |
| | 1.1/8 - 1.1/4" | 89143 | Alloy | 7 | |
| | 1.3/8 - 1.1/2" | 89144 | Alloy | 6 | Manual(Bolt) |
| | 1.5/8 - 1.3/4" | 89199 | Alloy | 5 | |
| | 1.7/8 - 2" | 89200 | Alloy | 4.5 | |
| | Left 3/8" | 89086 | Alloy | 16 | No.1 |
| | Left 1/2" | 89087 | Alloy | 12 | |
| | Left 5/8" | 89088 | Alloy | 11 | |
| | Left 3/4" | 89089 | Alloy | 10 | |
| | Left 7/8" | 89090 | Alloy | 9 | |
| | Left 1" | 89091 | Alloy | 8 | |
| | 5/16" | 89290 | N - Alloy | 18 | |
| | 3/8" | 89291 | N - Alloy | 16 | |
| | 1/2" | 89292 | N - Alloy | 12 | |
| | 5/8" | 89293 | N - Alloy | 11 | |
| | 3/4" | 89294 | N - Alloy | 10 | |
| | 7/8" | 89295 | N - Alloy | 9 | |
| | 1" | 89296 | N - Alloy | 8 | |
| | 5/16" | 18503 | HSS | 18 | 25Pro, No.1, Mini-Con |
| 3/8" | 18504 | HSS | 16 | 25Pro, No.1, No.2, Manual(Bolt), Mini-Con | |
| 1/2" | 18505 | HSS | 12 | | |
| 5/8" | 18506 | HSS | 11 | | |
| 3/4" | 18507 | HSS | 10 | | |
| 7/8" | 18508 | HSS | 9 | | |
| 1" | 18509 | HSS | 8 | | |
| 1.1/8 - 1.1/4" | 18510 | HSS | 7 | | No.2 |
| 1.3/8 - 1.1/2" | 18512 | HSS | 6 | Manual(Bolt) | |
| 1.1/8 - 1.1/4" | 89225 | HSS | 7 | | |
| 1.3/8 - 1.1/2" | 89226 | HSS | 6 | | |
| 1.5/8 - 1.3/4" | 89275 | HSS | 5 | No.1, No.2 | |
| Left 3/8" | 18513 | HSS | 16 | | |
| Left 1/2" | 18514 | HSS | 12 | | |
| Left 5/8" | 18515 | HSS | 11 | | |
| Left 3/4" | 18516 | HSS | 10 | | |
| Left 7/8" | 18517 | HSS | 9 | | |
| Left 1" | 18518 | HSS | 8 | | |
| Left 1.1/8 - 1.1/4" | 18519 | HSS | 7 | No.2 | |
| Left 1.1/2" | 18521 | HSS | 6 | | |
| UNF | 3/8" | 89038 | Alloy | 24 | 25Pro, No.1, No.2, Manual(Bolt) |
| | 7/16" | 89039 | Alloy | 20 | |
| | 1/2" | 89040 | Alloy | 20 | |
| | 9/16" | 89041 | Alloy | 18 | |
| | 5/8" | 89042 | Alloy | 18 | |
| | 3/4" | 89043 | Alloy | 16 | |
| | 7/8" | 89044 | Alloy | 14 | |
| | 1" | 89045 | Alloy | 12 | |

| Standard | Size | Code No. | Material | TPI | Suitable Die-Head |
|----------------|----------------|--------------|-----------|------------|---|
| Metric | 8mm | 89001 | Alloy | 1.25mm | 25Pro, No.1, Mini-Con |
| | 10mm | 89002 | Alloy | 1.5mm | 25Pro, No.1, Manual(Bolt) |
| | 12mm | 89003 | Alloy | 1.75mm | |
| | 14 - 16mm | 89140 | Alloy | 2mm | |
| | 18 - 22mm | 89141 | Alloy | 2.5mm | |
| | 24mm | 89009 | Alloy | 3mm | |
| | 27mm | 89192 | Alloy | 3mm | |
| | 30 - 33mm | 89193 | Alloy | 3.5mm | |
| | 36mm | 89194 | Alloy | 4mm | Manual(Bolt) |
| | 42mm | 89234 | Alloy | 4.5mm | |
| | Left 8mm | 89164 | Alloy | 1.25mm | |
| | Left 10mm | 89165 | Alloy | 1.5mm | No.1 |
| | Left 12mm | 89166 | Alloy | 1.75mm | |
| | Left 14 - 16mm | 89167 | Alloy | 2mm | |
| | Left 18 - 22mm | 89168 | Alloy | 2.5mm | |
| | Left 24mm | 89169 | Alloy | 3mm | |
| | 8mm | 89302 | N - Alloy | 1.25mm | 25Pro, No.1, Manual(Bolt) |
| | 10mm | 89303 | N - Alloy | 1.5mm | |
| | 12mm | 89304 | N - Alloy | 1.75mm | |
| | 14 - 16mm | 89305 | N - Alloy | 2mm | |
| | 18 - 22mm | 89306 | N - Alloy | 2.5mm | |
| | 24mm | 89307 | N - Alloy | 3mm | |
| | 8mm | 18522 | HSS | 1.25mm | |
| | 10mm | 18523 | HSS | 1.5mm | 25Pro, No.1, No.2, Mini-Con, Manual(Bolt) |
| | 12mm | 18524 | HSS | 1.75mm | |
| 14 - 16mm | 18538 | HSS | 2mm | | |
| 18 - 22mm | 18539 | HSS | 2.5mm | | |
| 24mm | 18530 | HSS | 3mm | | |
| 27mm | 18531 | HSS | 3mm | | |
| 30 - 33mm | 18532 | HSS | 3.5mm | No.2 | |
| 36mm | 18534 | HSS | 4mm | No.1, No.2 | |
| Left 8mm | 18556 | HSS | 1.25mm | | |
| Left 10mm | 18541 | HSS | 1.5mm | | |
| Left 12mm | 18542 | HSS | 1.75mm | | |
| Left 14 - 16mm | 18543 | HSS | 2mm | | |
| Left 18 - 22mm | 18544 | HSS | 2.5mm | | |
| Left 24mm | 18555 | HSS | 3mm | | |

| Standard | Size | Code No. | Material | TPI | Suitable Die-Head |
|----------|----------------|--------------|-----------|-----|---------------------------------|
| UNC | 5/16" | 89137 | Alloy | 18 | 25Pro, No.1, No.2, Manual(Bolt) |
| | 3/8" | 89015 | Alloy | 16 | |
| | 7/16" | 89138 | Alloy | 14 | |
| | 1/2" | 89016 | Alloy | 13 | |
| | 9/16" | 89139 | Alloy | 12 | |
| | 5/8" | 89017 | Alloy | 11 | |
| | 3/4" | 89018 | Alloy | 10 | |
| | 7/8" | 89019 | Alloy | 9 | |
| | 1" | 89020 | Alloy | 8 | |
| | 1.1/8 - 1.1/4" | 89197 | Alloy | 7 | |
| | 1.3/8 - 1.1/2" | 89198 | Alloy | 6 | |
| | 5/16" | 89312 | N - Alloy | 18 | |
| | 3/8" | 89313 | N - Alloy | 16 | |
| | 7/16" | 89314 | N - Alloy | 14 | |
| | 1/2" | 89315 | N - Alloy | 13 | 25Pro, No.1, Manual(Bolt) |
| | 9/16" | 89316 | N - Alloy | 12 | |
| | 5/8" | 89317 | N - Alloy | 11 | |
| | 3/4" | 89318 | N - Alloy | 10 | |
| | 7/8" | 89319 | N - Alloy | 9 | |
| | 1" | 89320 | N - Alloy | 8 | |
| | 1.1/4" | 18536 | HSS | 7 | |
| | 1.1/2" | 18537 | HSS | 6 | |

TAPER THREAD GAUGE



※Photo: Taper Thread Gauge Set 1/2" - 1"

- For inspecting accuracy of tapered threading (JIS B0203).
- Made of durable die steel.

| Item | Set 1/2"~1" | Set 1/2"~2" |
|----------------------|---|---|
| Code No. | 56100 | 56127 |
| Standard Accessories | Taper Thread Gauge (1/2", 3/4", 1") Case | Taper Thread Gauge (1/2", 3/4", 1", 1.1/4", 1.1/2", 2") Case |

※Taper Thread Gauges cannot be calibrated after use.

Optional Accessories

Taper Thread Gauge (Individual)

| Size | Code No. | Size | Code No. |
|--------|--------------|--------|--------------|
| 1/2" | 56103 | 2" | 56116 |
| 3/4" | 56104 | 2.1/2" | 56117 |
| 1" | 56105 | 3" | 56118 |
| 1.1/4" | 56114 | 4" | 56119 |
| 1.1/2" | 56115 | | |

NIPPLEMAX



- For making pipe nipples.
- ※ Not applicable to inner coated pipes and stainless steel pipes.
- Easy set-up and operation.
- Can be used with the threading machines from other brands.
- ※ Turn on the threading machine while pushing the dies against the pipes.

Set 1/2"~3/4"

| | |
|----------------------|-----------------------------|
| Code No. | 36003 |
| Capacity | 1/2"~3/4" |
| Standard Accessories | Nipplemax(1/2", 3/4"), Case |

Optional Accessories

Nipplemax (Individual)

| Size | Code No. | Size | Code No. |
|--------|--------------|--------|--------------|
| 1/2" | 36100 | 2" | 36150 |
| 3/4" | 36110 | 2.1/2" | 36160 |
| 1" | 36120 | 3" | 36170 |
| 1.1/4" | 36130 | 3.1/2" | 36180 |
| 1.1/2" | 36140 | 4" | 36190 |

NIPPLE CHUCK



- For making pipe nipples. Applicable to inner coated pipes.
- Easy operation. Can be used with the threading machines from others brands.
- ※ Not applicable to Astronic 1 and Beaver 25.

Set 1/2"~2"

| | |
|----------------------|---|
| Code No. | BSPT: 01810 NPT: 01850 |
| Capacity | 1/2"~2" |
| Standard Accessories | Cap (1/2", 3/4", 1", 1.1/4", 1.1/2", 2"), Handle Holder, Case |

Optional Accessories

Cap (Individual)

| Size | Code No. | Size | Code No. |
|------|--------------|--------|--------------|
| 1/2" | 01812 | 1.1/4" | 01815 |
| 3/4" | 01813 | 1.1/2" | 01816 |
| 1" | 01814 | 2" | 01817 |

THREADING OIL

SDS ※SDS is available on our website.

Water washable

- Can be washed out easily with water.
- Sharp cutting without distortions.
- ※ Deteriorated oil may cause defective threading.
- Applicable to stainless steel pipe too.

For general threading

- Sharp cutting without distortions.
- ※ Deteriorated oil may cause defective threading.
- Applicable to stainless steel pipe too.



4L

16L

| Item | White 4L | White 16L |
|-----------|--------------|--------------|
| Code No. | 85629 | 85630 |
| Qty / Lot | 6 cans | 1 can |



4L

4L

16L

| Item | Red 4L | Red 200L | Cool 4L | Cool 16L | Cool 200L |
|-----------|--------------|--------------|------------------------|------------------------|---------------|
| Code No. | 85628 | 85640 | Available with request | Available with request | 85640S |
| Qty / Lot | 6 cans | 1 drum | 1 can | 1 can | 1 drum |

SEAL TAPE

SDS ※SDS is available on our website



- Sealant for steel, aluminum, stainless steel, plastic pipe.
- Temperature range -100~230℃.
- Easy to tighten and loosen pipe.
- Not affected by chemicals, solvent, steam.
- ※ Not applicable to Alkali fusion metal, Chlorine trifluoride.



| | |
|------------|---------------------------------------|
| Code No. | R50356 |
| Dimensions | Thickness:0.1mm/Width:13mm/Length:15m |
| Qty / Box | 500 |

PIPE SUPPORT

For accurate threading with long pipes

| Item | Code No. | Min. Height | Max. Height | Applicable model |
|---|--------------|-------------|-------------|--|
| Pipe Support ※ Threading machine using without legs  | AS105 | 145mm | 230mm | Beaver 25 Astronic 1 |
|  | 88901 | 187mm | 244mm | Beaver 50, 50G Astronic 1.5, 2, 3 Piset 40, 60, 90 |
|  | 59920 | 261mm | 342mm | Beaver 80, 100 Astronic 4 |